

SKD Black Hole Dimmable White Serials LED Luminaire

—SKD Indoor Lighting Product Portfolio

Product Description

- Aluminum Housing with expert thermal management
- Classic White plus Grey color design
- Fantastic glaring control for the high-quality lighting environment
- Smooth dimmable white performance
- World-class lens with patent
- High reliable light source with patent
- DALI and 0-10V dimming interface options
- IP20 design for indoor lighting application
- Easy installation

Product Specification

- 2700K, 3000K, 4000K multi-CCT white options
- CRI 90,
- < 3SDCM
- UGR < 13

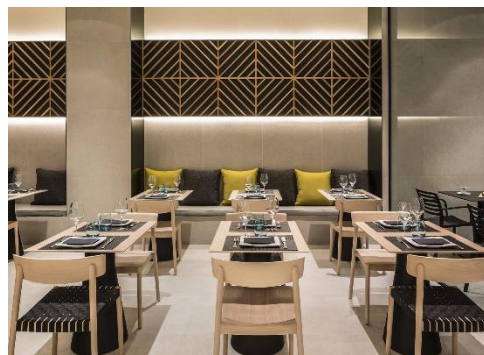
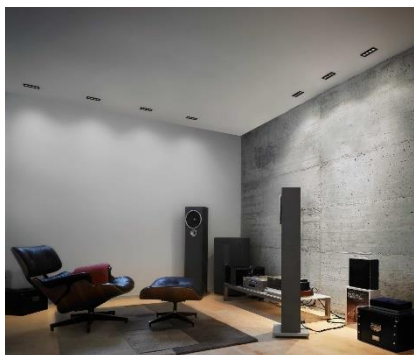


Unique Advantages

- Fantastic visible lighting performance as invisible luminaire
- Total solutions for Tunable White with patented light source & lens & driver
- Excellent convenience for the installation and commissioning

Applications

- High end Residential, Retail, Hotel, Restaurant
- Embedded into the intelligent building control system via DALI and 0-10V
- Connected to the wireless control system, such as Casambi



SKD Black Hole Dimmable White LED Luminaire Specification

8 selections, 2700K/3000K/4000K Multi-CCT Options

Modules and Mechanical Patents, with no patent risk globally

Product Name	Power(W)	Tunable White CCT Range	CRI	Luminous Flux (lm)	Dimension (mm)	Cut Size (mm)	Viewing Angle (°)	Electrical Parameters
SKD-BHTW-Linear-1	2.1W	2700K/3000K/4000K	90	260	45*45*H46	35*35	30°	If=700mA(max.) Vf=3V
SKD-BHTW-Linear-2	4.2W	2700K/3000K/4000K	90	520	75*45*H46	65*35	30°	If=700mA(max.) Vf=6V
SKD-BHTW-Linear-3	6.3W	2700K/3000K/4000K	90	780	95*45*H46	85*35	30°	If=700mA(max.) Vf=9V
SKD-BHTW-Linear-5	10.5W	2700K/3000K/4000K	90	1300	166*45*H46	158*35	30°	If=700mA(max.) Vf=15V
SKD-BHTW-Square-4	8.4W	2700K/3000K/4000K	90	1040	75*75*H40	65*65	30°	If=700mA(max.) Vf=12V
SKD-BHTW-Square-9	18.9W	2700K/3000K/4000K	90	2340	106*106*H40	98*98	30°	If=700mA(max.) Vf=27V
SKD-BHTW-Round-3	6.3W	2700K/3000K/4000K	90	780	Ø66*40	Ø55	30°	If=700mA(max.) Vf=9V
SKD-BHTW-Round-7	14.7W	2700K/3000K/4000K	90	1820	Ø86*40	Ø75	30°	If=700mA(max.) Vf=21V

2

LED Light Source Specification

Brand	Product	If(mA)	Vf(V)	Multi-CCT options	CRI	SDCM	Efficacy(lm/W)	Lifetime
Lattice Power	CSP1919	700	3	2700K/3000K/4000K	> 90	< 3SDCM	145	50000h

LED Patented, with no patent risk globally.


Black Hole Dimmable White LED Luminaire Dimmable Constant Current Driver Option

Brand	Product	Dimming Method	I(mA)	Output range(V)	Special comment
EUCHIPS	EUP20D-1HMC	DALI	300mA	9-42V	SKD-BHTW-Linear-1 should be in serials for min. 3 luminaires SKD-BHTW-Linear-2 should be in serials for min. 2 luminaires
EUCHIPS	EUP20A-1HMC	0-10V	300mA	9-42V	

Driver Patented, with no patent risk globally.

Certificate availability for Europe and Asia



About SKD Lighting

Dedicated to focus on LED Lighting Solution Kits Delivery Supply Chain, via the 4S Values:

Security	Supply Chain Security, for customer information security, patent security, product information security, business data security
Service	Supply Chain Service, for product service, technical service, logistic service, data service
Sustainability	Supply Chain Sustainability, by SKD business focus & sustainability, sustainable service, product development sustainability
Saving	Supply Chain Saving, for cost optimization, high performance/price solutions & service

Our Vision——Global Solution Kits Delivery for Lighting**Contacts:**

SKD Lighting (Zhongshan) Technology Ltd., Co.

Phone: (86)760-85286181

Mail: skd3@skdlighting.com

Web: www.skdlighting.com

Address: Floor 4, Building A, No. 97 Roadside, Dongzhen North Road, Huoju Development Zone, Zhongshan, Guangdong, China

